

SALADBOWL's VISION

**Create a New Style of
Agriculture**















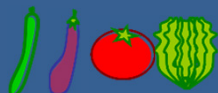


We hope
agriculture will gain
the position of
a regionally valuable industry.

Business Development of Saladbowl Group

(1) Saladbowl

- Located in Chuo City, Yamanashi Pref. (Established in April 2004)
- Cultivation area: Approx. 18 ha
- Produce 30 items per year (Tomatoes, cucumbers, eggplants, broccoli, green-leaf vegetables, etc.)



Launched businesses (2 farm lands)

(2) Agrivision

- Located in Hokuto City, Yamanashi Pref. (Planting started in 2016)
- Cultivation area: 3.0 ha
- Grape tomatoes (splash)/ middle-size tomatoes



(3) Hyogo Nextfarm

- Located in Kasai City, Hyogo Pref. (Planting started in 2015)
- Cultivation area: 3.6 ha
- Grape tomatoes (splash)/ big-size tomatoes
- Next-generation greenhouse horticulture model business



Overseas production business (Launched)

[Overseas]PAN-SALADBOWL

- Established in Vietnam Dalat, etc. (Production started in 2016)
- Cultivation area: 7.0 ha ⇒ Extended to 300 ha in 5 years
- Flowers (Spray mums, carnations), strawberries, tomatoes and other vegetables



Projects are underway (3 farm lands)

(4) Iwate Milkyway Farm

- Located in Ofunato City, Iwate Pref.
- Cultivation area: 1.5 ha
- The region is a coastal area with little snowfall and long day light.
Developing as a new production area of tomatoes harvested from summer through autumn



(5) Tohoku Agrihito

- Located in Miyagi Pref.
- Cultivation area: 3.0 ha
- The region is a coastal area with little snowfall and long day light.
Developing as a new production area of tomatoes harvested from summer through autumn



(6) Agrisite

- Located in Hokuto City, Yamanashi Pref.
- Cultivation area: 2.6 ha
- Collaborate with Agrivision
- Merge with Hulic Co., Ltd.



Group Companies of Saladbowl

[Domestic]

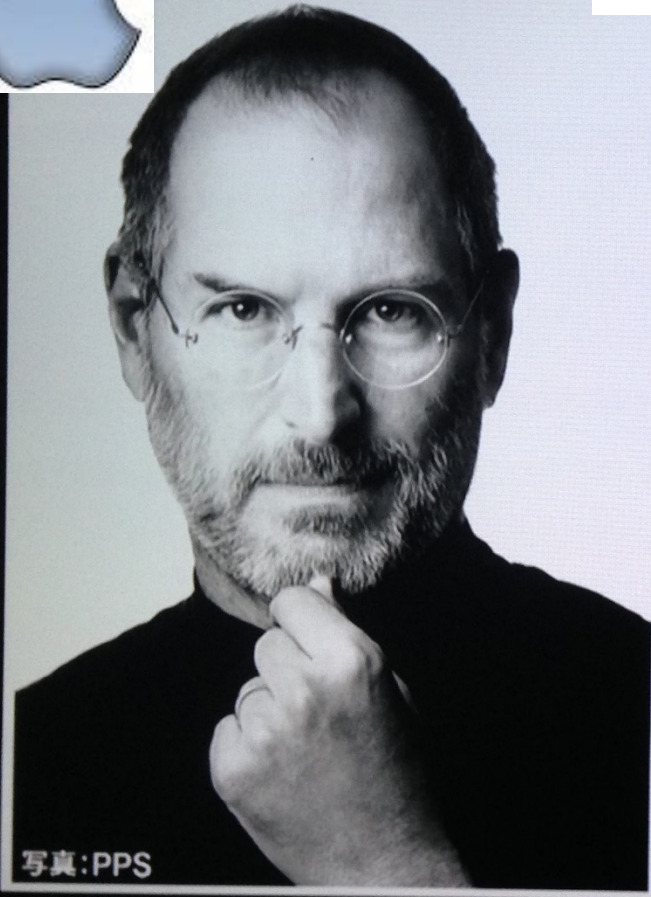
(Employees)

- Saladbowl Co., Ltd. (18 ha) → 40
- Agrivision Co., Ltd. (3 ha) → 80
- Hyogo Nextfarm Co., Ltd. (3.6 ha) → 100
- Agrisite Co., Ltd. (2.6 ha) → 60
- Tohoku Agrihito Co., Ltd. (3 ha) → 70
- Iwate Milkyway Farm Co., Ltd. (1.5 ha) → 30

[Overseas]

- PAN-SALADBOWL (Vietnam) → 160

Employment of 500 people created



Steve Jobs Founder of Apple Inc.

People don't know
what they want
until you show it to
them.

Challenge to a new era has already
started.

sensing monitoring

Automatic transporting robot

Automatic harvesting robot

Robotics

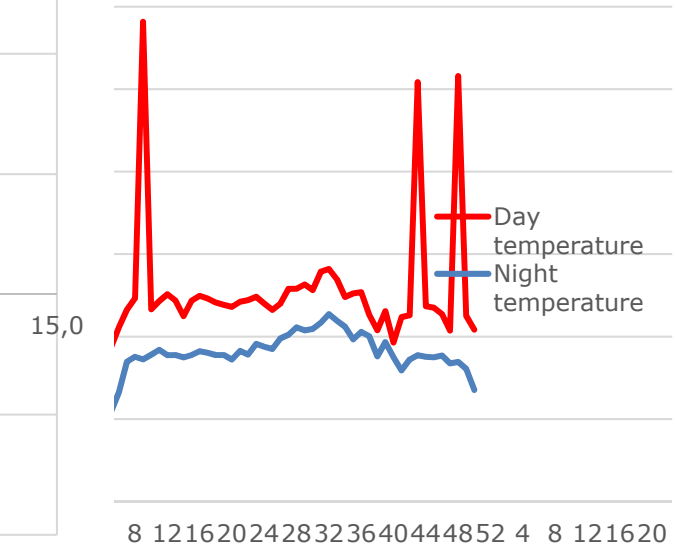
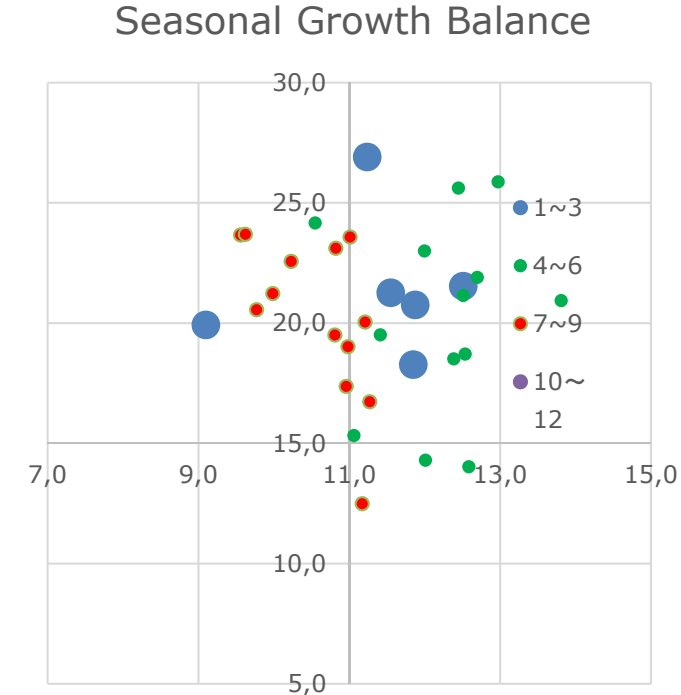
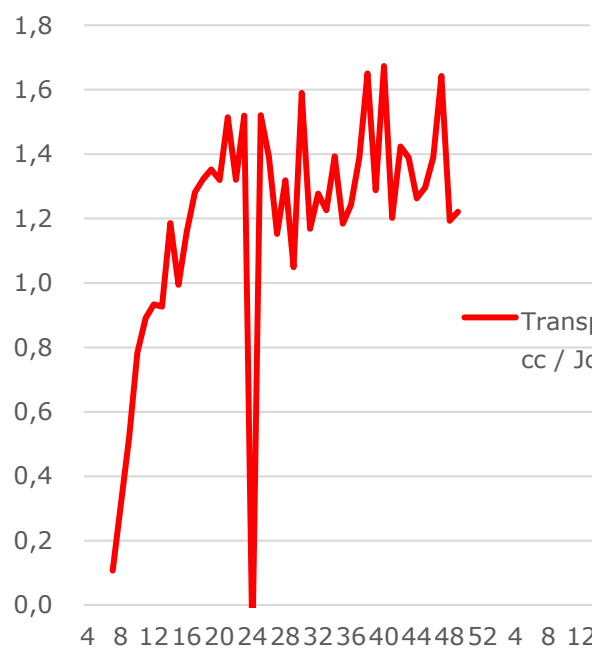
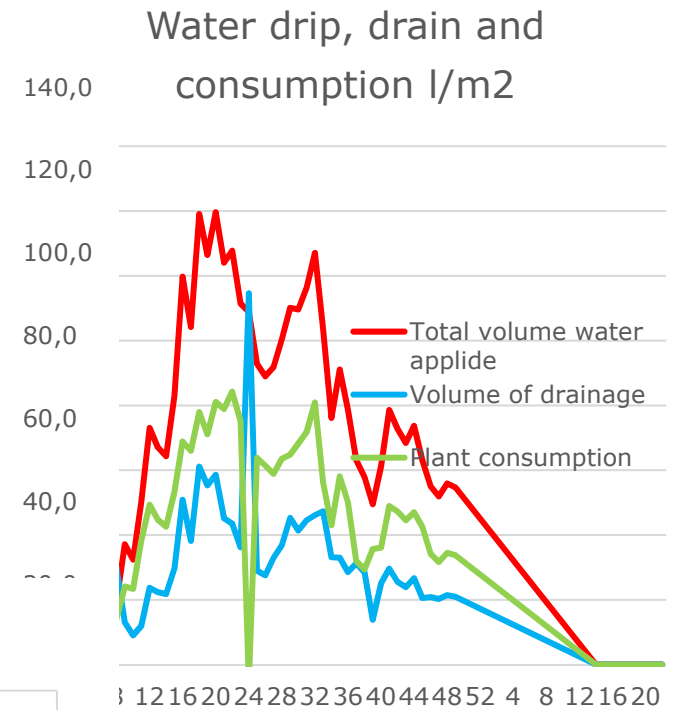
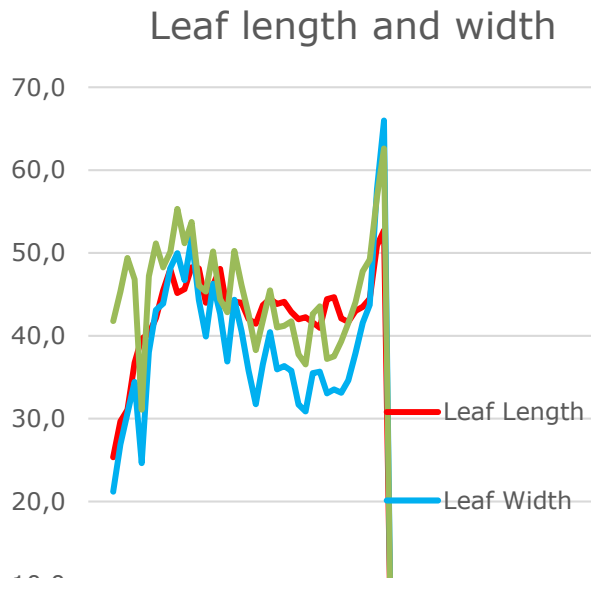
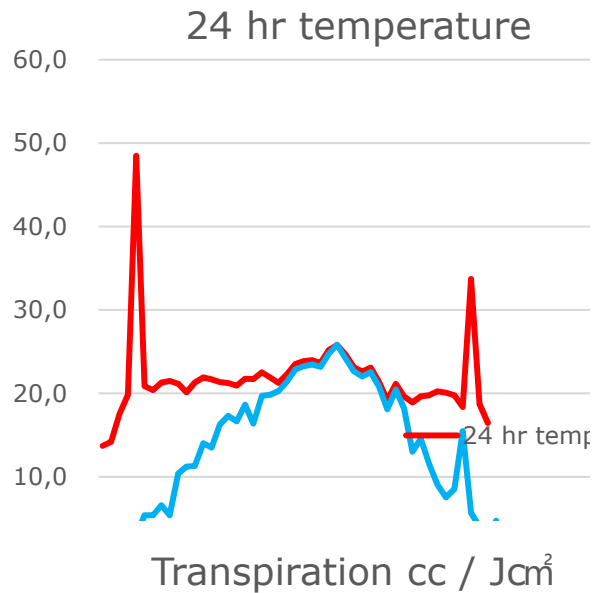
IoT

Harvest forecast system

Big Data

Deep Learning

AI



Create unprecedented value by introducing new technologies and know-how



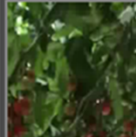
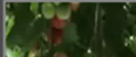


期間 2017/05 ~ 2017/06 表示 アグリビジョン_A53 (12件) ▼

2017年6月6日 平均気温--℃ 降水量--mm 日照時間--h 実 Mapへ戻る

△ A-1エリアで検知しました(他10エリア)

検知情報 天候グラフ

詳細画像

 A-1エリア 検知数3件	 A-2エリア 検知数1件	 A-3エリア 検知数2件
		

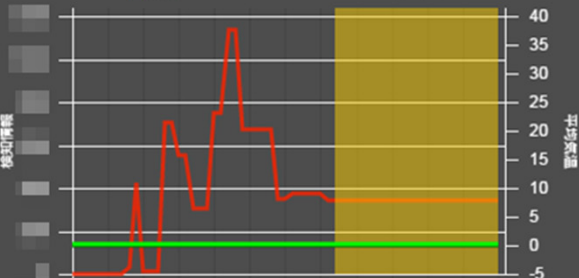
収穫予測

- 圃場：アグリビジョン_A53 (12件)
- 品種：トマト
- 撮影日：2017年6月6日
- 検知数合計：
- 収穫数予測：

推移

2017/05 ~ 2017/06 表示

実数



検知情報

日経時価

Instead of competing with
someone and mutually
depriving something to
seek growth,

We'd like to grow by
creating values on our own.

But...

Not all has been smooth sailing.

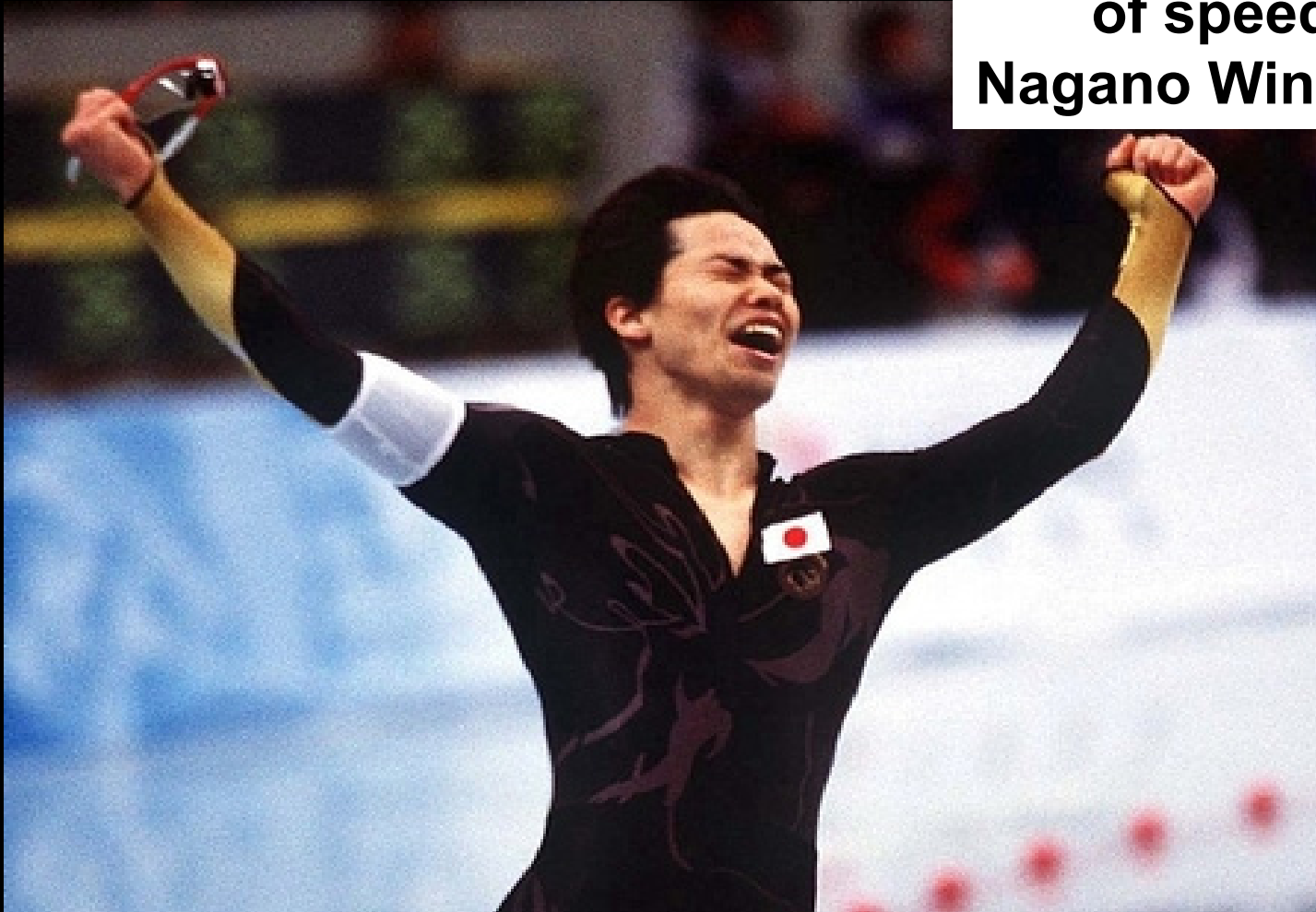
As recently as several years ago...



We were often asked,
“Who could ever do such a
thing?”

If you have strong intentions,
you can create a new style.

**Mr. Hiroyasu Shimizu
Gold medalist
of speed skating
Nagano Winter Olympics**



Make the inconceivable possible by delivering results.

Agriculture can also largely change through Science and Technology.

Change “You’ll never make it” to
“That’s commonplace” at the time!

Strive to create the normal of the following era!

What happens by smart agriculture...

1. Realization of profitable agriculture

- ▣ Producers provide society with value.
- ▣ Higher quality agricultural products will be supplied in a more stable manner (four stabilities).

2. Improvement in producers' working conditions

- ▣ Salary and bonus ▣ Shorter working hours
- ▣ Two days off per week, paid leave

3. Drastic change to state-of-the-art industry

- ▣ Change to a popular industry and industrial category

4. Stream of superior human resources into the agricultural world

- ▣ Ensuring human resources and their development (in-house development, acquisition from outside)

5. Expansion of business domain

- ▣ Production, processing, distribution, retail, branding, and promotion

6. To become a hub industry in local areas!!

- ▣ Development along with regional businesses such as employment, financing, materials, distribution and retail

Science and Technology will be meaningful only if they have made people happy and attained a rich society and community.

[Create a new style of agriculture]

**The time has come
when we can enjoy dynamic growth
while feeling speed and scale.**