



Netherlands Food and Consumer  
Product Safety Authority  
*Ministry of Agriculture,  
Nature and Food Quality*



# The Netherlands Food and Consumer Product Safety Authority

FCM 09/2019

Dr. Tom van Noort

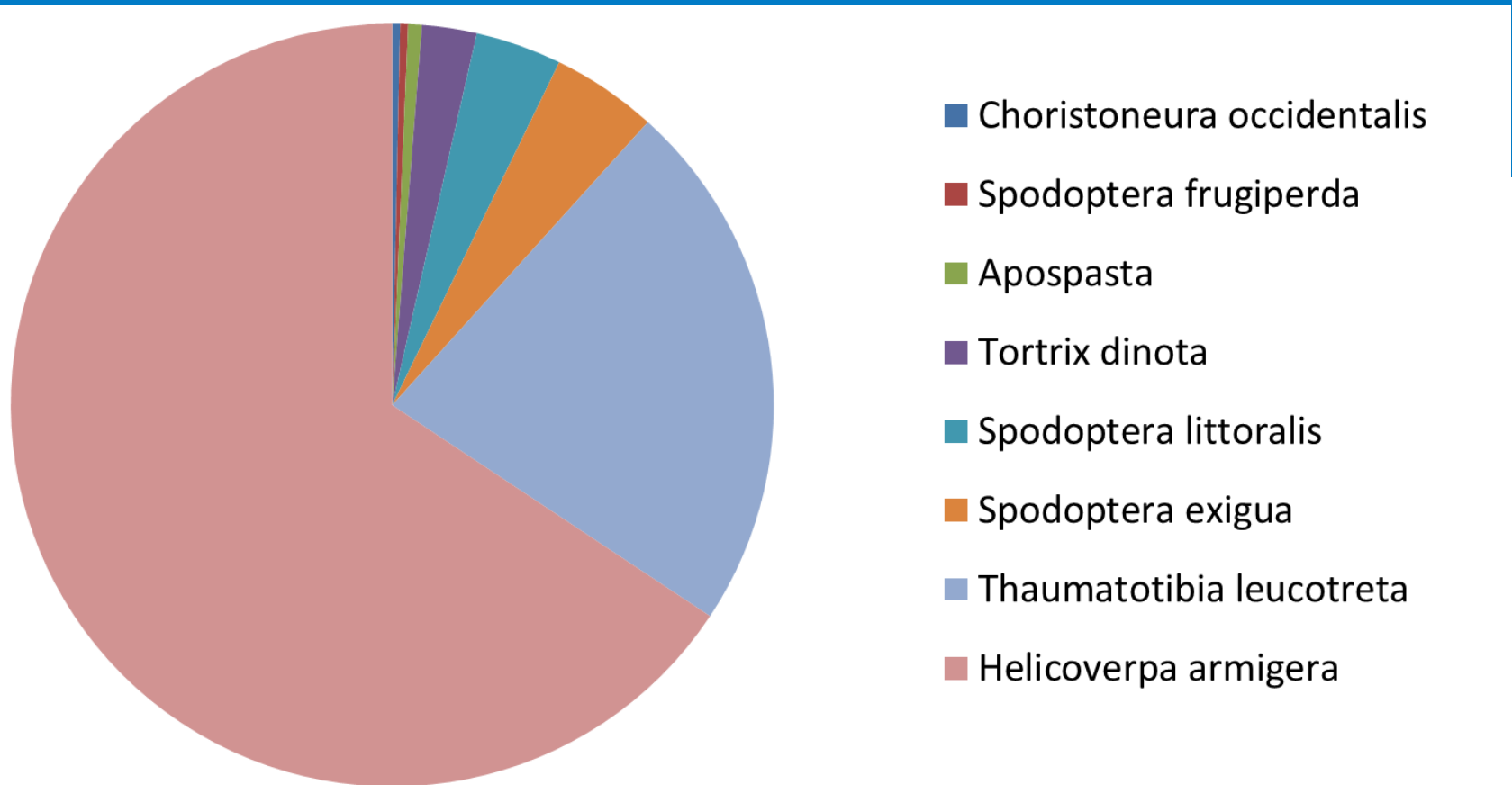


# Interceptions Rosa/Kenya

75% Noctuidae (owlet caterpillars)  
25% Tortricidae (leafrollers)



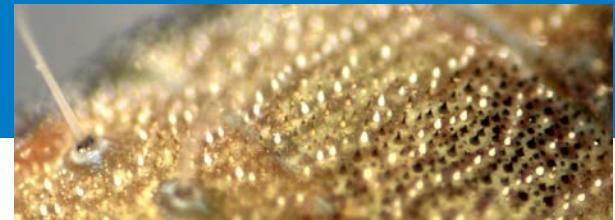
# Interceptions Rosa/Kenya





# Interceptions Rosa/Kenya

*Helicoverpa armigera*  
(cotton bollworm) NOCTUIDAE

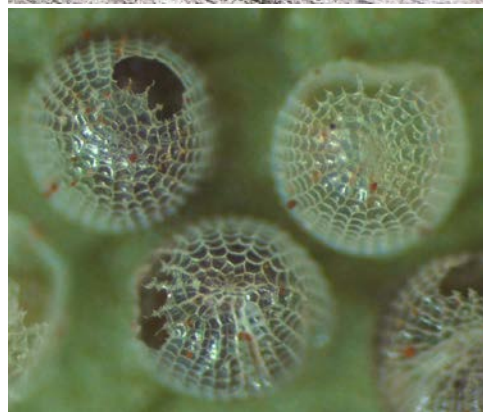


Non regulated pest



# Interceptions Rosa/Kenya

*Spodoptera exigua*  
(lesser armyworm) NOCTUIDAE



Non regulated pest



# Interceptions Rosa/Kenya

*Apospasta* sp.  
NOCTUIDAE



Non regulated pest



# Interceptions Rosa/Kenya

## *Spodoptera littoralis* (cotton leafworm) NOCTUIDAE



(Quarantine pest)



# Interceptions Rosa/Kenya

*Spodoptera frugiperda*  
(fall armyworm) NOCTUIDAE



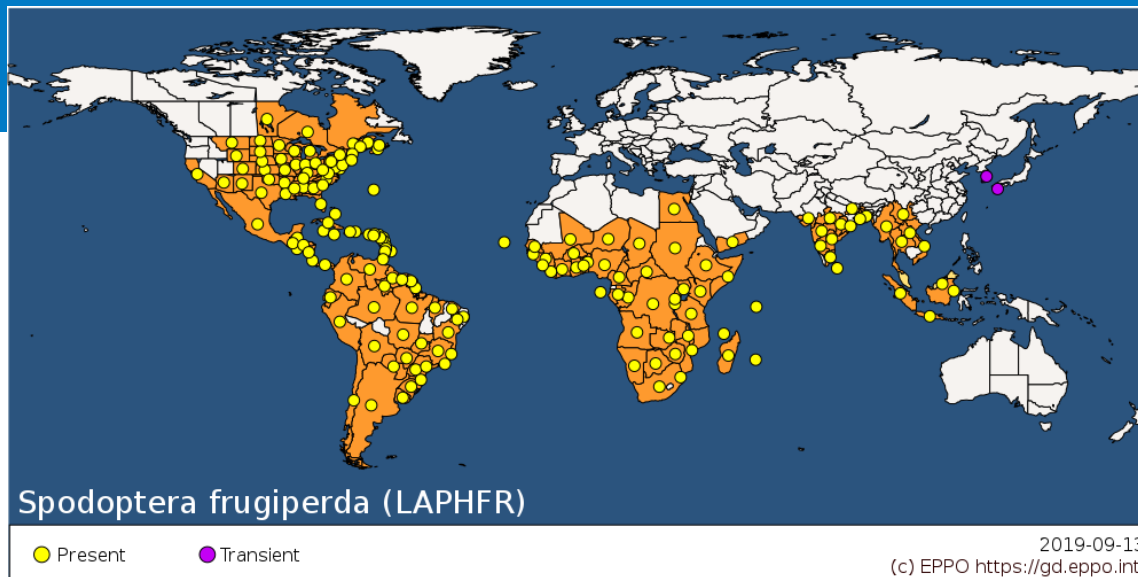
Quarantine pest!





# Interceptions Rosa/Kenya

## *Spodoptera frugiperda* (fall armyworm) NOCTUIDAE

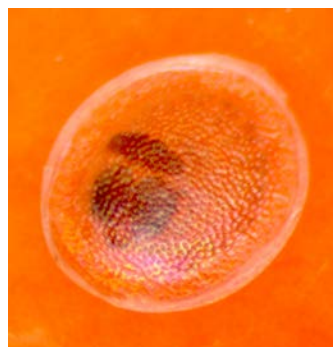
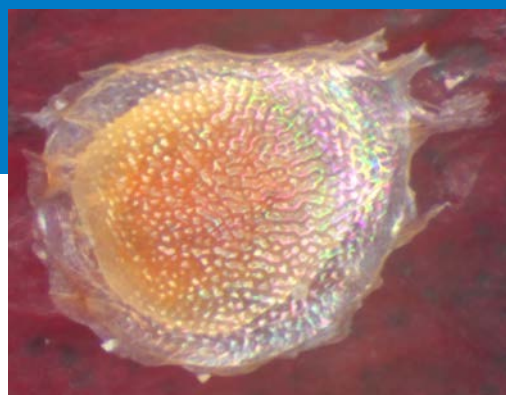
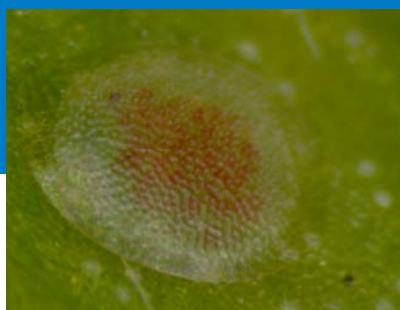
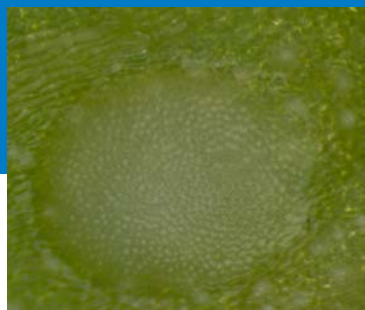


Quarantine pest!



# Interceptions Rosa/Kenya

## *Thaumatotibia leucotreta* (false codling moth) TORTRICIDAE

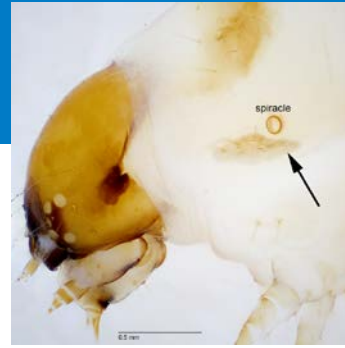


Quarantine pest!



# Interceptions Rosa/Kenya

## *Thaumatotibia leucotreta* (false codling moth) TORTRICIDAE



Quarantine pest!<sup>11</sup>



# Interceptions Rosa/Kenya

*Thaumatotibia leucotreta*  
(false codling moth) TORTRICIDAE



Quarantine pest!



# Interceptions Rosa/Kenya

*Thaumatotibia leucotreta*  
(false codling moth) TORTRICIDAE

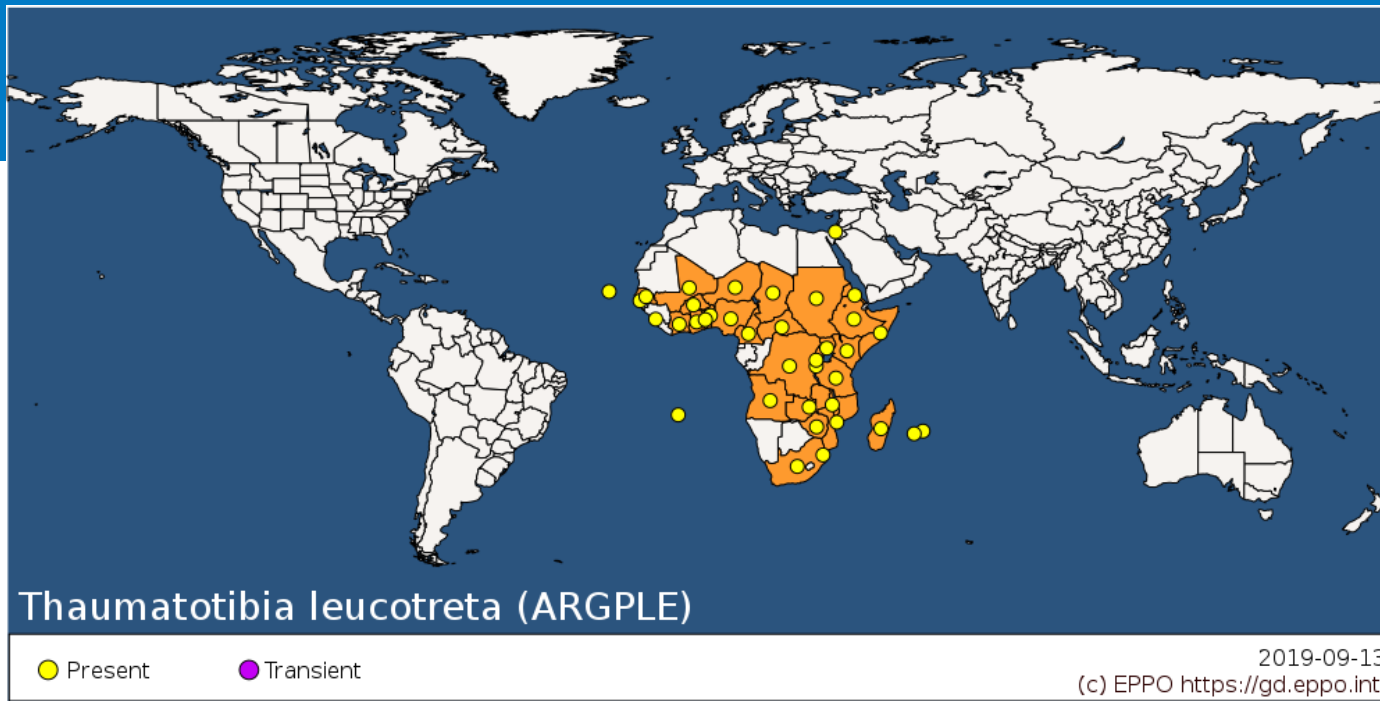


Quarantine pest!



# Distribution

## *Thaumatotibia leucotreta* (false codling moth) TORTRICIDAE

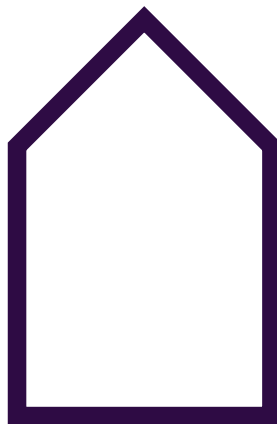


Quarantine pest!



# Interceptions Rosa/Kenya

*Choristoneura occidentalis*  
(citrus leafroller) TORTRICIDAE



Non regulated pest



# Interceptions Rosa/Kenya

*Tortrix dinota*  
(citrus leafroller) TORTRICIDAE



Non regulated pest





*Spodoptera littoralis*

*Thaumatotibia leucotreta*

*Spodoptera littoralis*

*Spodoptera exigua*

*Spodoptera frugiperda*

*Helicoverpa armigera*

*Choristoneura occidentalis*

*Tortrix dinota*

*Thaumatotibia leucotreta*

*Aospasta* sp.

