



# ZHYTOMYR REGION - BRIEF INFORMATION



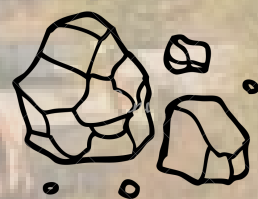
**AREA** – 29.9 SQ. M.



**POPULATION** – 1.25 MLN. PEOPLE



**FOREIGN DIRECT INVESTMENTS** – 243.6  
MLN. USD



**85% OF NATIONAL TITANIUM DEPOSITS** ARE  
LOCATED IN THE REGION



MORE THAN **1 MLN. HECTARES OF FORESTS**  
ARE IN THE REGION (4 TH PLACE IN FOREST  
GROWTH IN UKRAIN)

# REGIONAL LOGISTIC CENTERS AND INDUSTRIAL PARKS

Korostenskyi Industrial Park  
(42.2 h)



Novohrad-Volynskyi Industrial  
Park



Malynskyi Industrial Park

"Zhytomyr East" Industrial  
Park (24.7 h)



Hlybochytsia Logistic Centre





# THE MAIN ECONOMIC ACTIVITIES IN THE REGION

## MINING AND PROCESSING (GRANITE, STONE, TITANIUM, QUARTZITE)

85% of national titanium ore deposits and quartzite

90% of national labradorite and gabbro deposits

85% of national stone and granite mining and processing

187 proven peat deposits

## AGRICULTURE (GROWING CEREALS, BREEDING COWS AND PIGS)

52% of agricultural lands. 160 land plots of Greenfield and Brownfield for investing.

There are about 70 food production factories in the region.

## INDUSTRY (WOODWORKING, FLAX PROCESSING AND SEWING CLOTHES)

the 1 st region in the rank in timber stocks. The 4 th region in the rank in forests growth (30% of its territory).

In accordance with the regional strategy for the development of the agro-industrial sector for 2021-2027, it is planned to expand flax sown areas and flax processing plants.

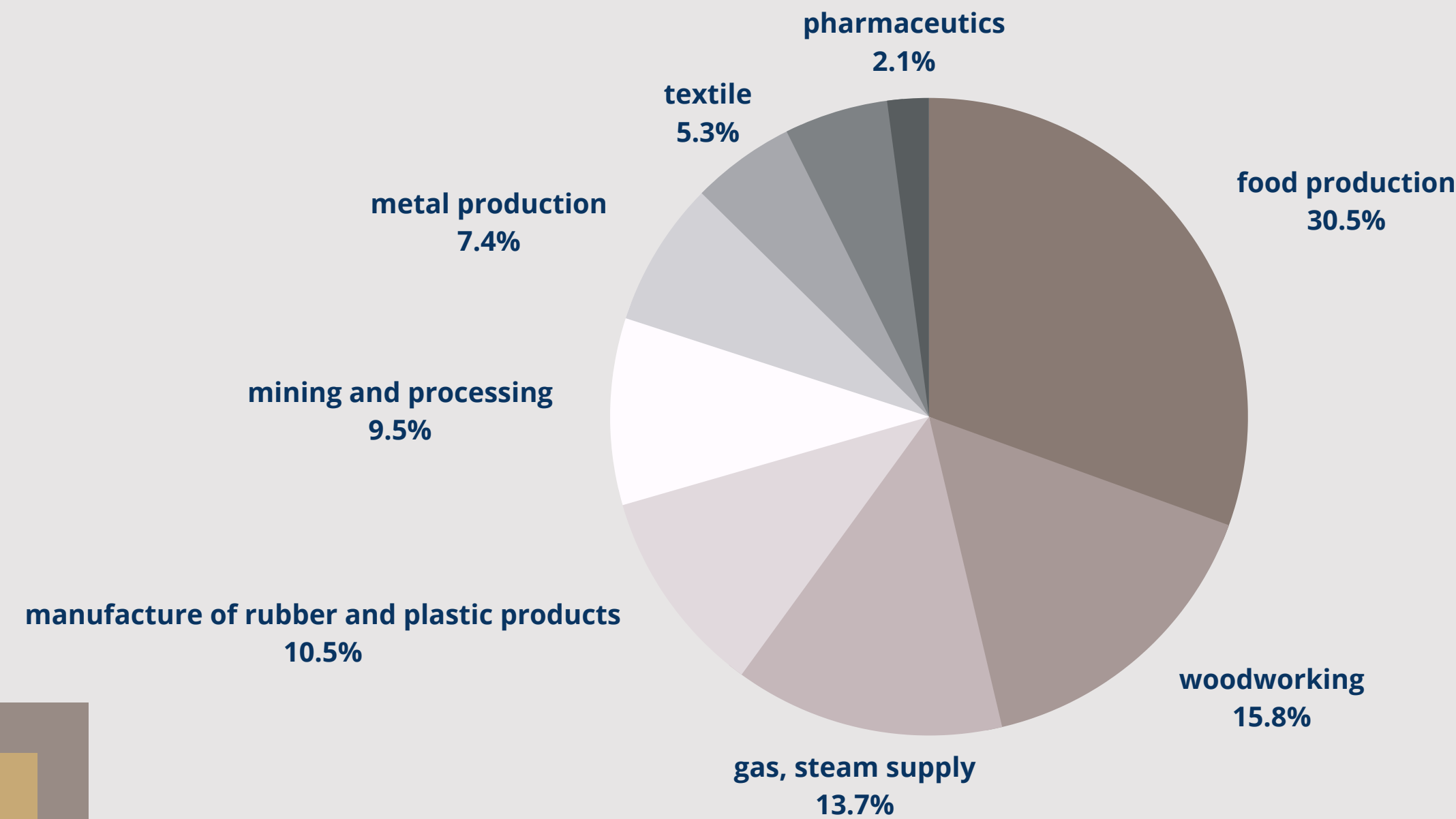
There are about 35 large garment factories in the region.



# THE STRUCTURE OF ECONOMIC ACTIVITIES IN THE REGION



as of 2019



# INSTITUTIONAL AND LEGAL SUPPORT OF INTERNATIONAL PARTNERS IN THE REGION

## Zhytomyr Regional Development Agency

Information, consulting, management, marketing, technical and legal support services for projects

## Council on Investment

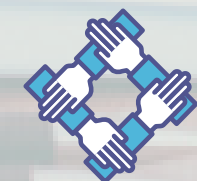
Systematic work with investors to solve problematic issues in in the course of the activity of enterprises involving all necessary services and departments in the support of projects



**40** centres of administrative services



**36** banks



**6** business centres

# PROPOSALS FOR COOPERATION



Zhytomyr region is open for international partners.  
We are ready for fruitful and reliable cooperation.



# CREATION OF A BLUEBERRY FARM WITH "BIOS" FARM

## KEY INFORMATION:

Address: Troyaniv village, Zhytomyr district

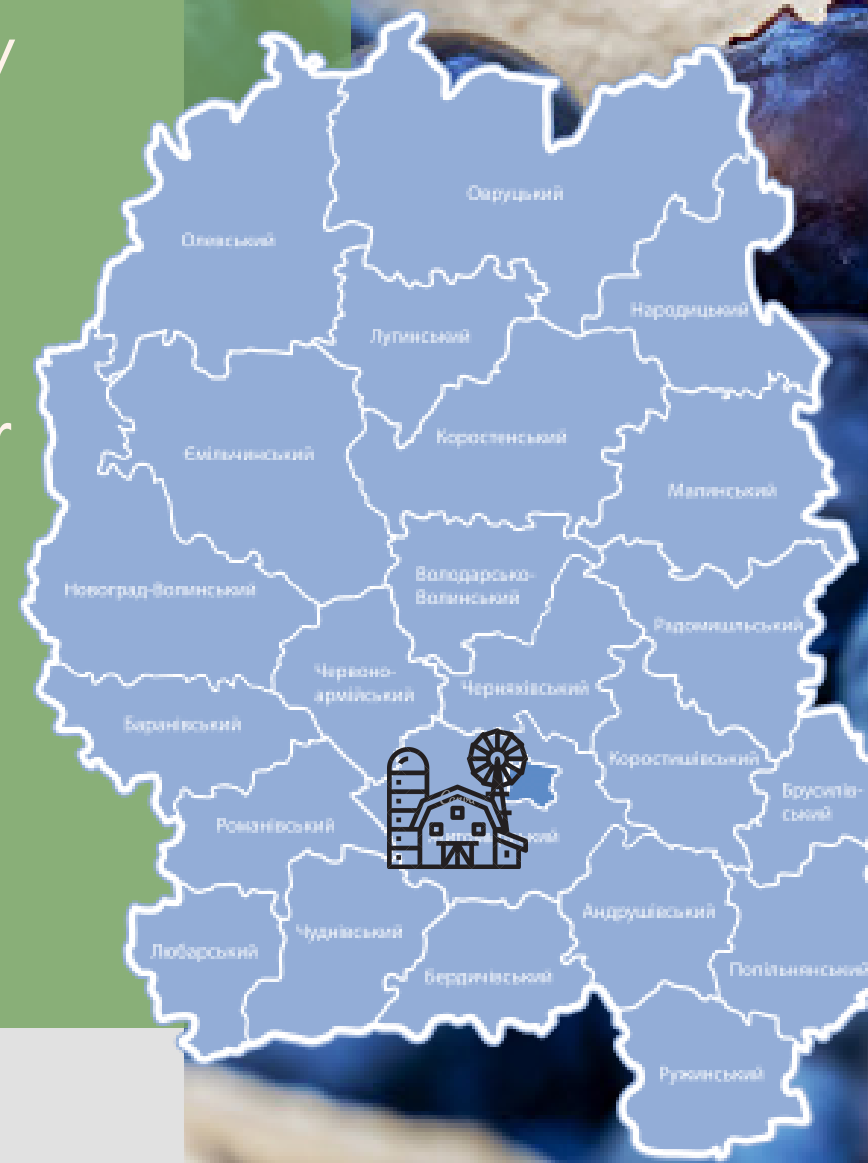
The company will create permanent and seasonal jobs (40-60), including high-tech, which require a certain level of education. The project has the potential to become the core of economic activity of a large agroindustrial complex.

## FINANCIAL DETAILS:

Project costs: 650 thousand USD. It is proposed for partners to provide co-financing for joint farm development.

Possible capacities - 27,000 tons of blueberries (from 27 hectares)

Payback period is 5-6 years.





# BUSINESS ON SNAILS IN PARTNERSHIP WITH FARM "RAVLYKY MALOYI HORY"

## KEY INFORMATION:

Address: Berdychiv district, Khoziv village

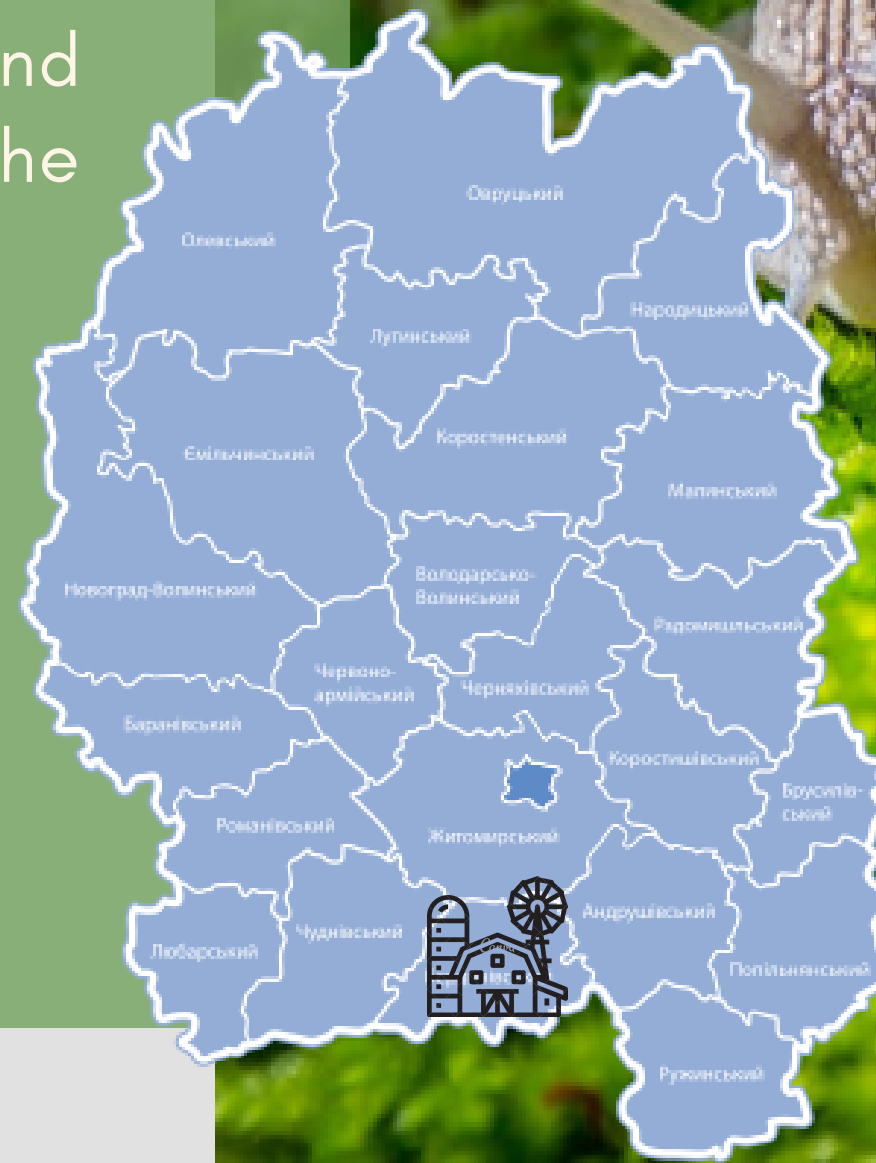
Creation of a modern eco-farm in the form of an aviary for growing young snails on conditional parameters and auxiliary infrastructure for its maintenance that will allow to sell product and receive partners at the expense of the corresponding monetary income.

## FINANCIAL DETAILS:

Project costs: 555.5 thsnd. UAH. It is proposed for partners to provide co-financing for joint farm development.

Payback period is 1 year

Yield is 67%.







# CONSTRUCTION OF THE FLAX PLANT WITH "LENAHROPROM" LLC

## KEY INFORMATION:

Address: Baranivka district

The project envisages the creation of a modern multidisciplinary vertical integrated agro-industrial complex. Subdivisions of the complex that is being created must provide all stages of production and promotion of project products. The project has the potential to become the core of economic activity of a large agroindustrial complex.

## FINANCIAL DETAILS:

Project costs: 15.8 mln. EUR. It is proposed for partners to provide co-financing for joint production development.

Payback period is 3.8 years

Expected project revenues from manufactured products for 1 production cycle 13.655 million EUR.





# CREATION OF BIOETHANOL PLANT WITH ZHYTOMYR REGIONAL COUNCIL AND PRIVATE ENTREPRENEUR

## KEY INFORMATION:

Address: Popilnia district, Kornyn village

The current business plan of the project was prepared jointly with the London Investment Fund, the approximate period of project implementation is about 18 months. 3 types of products can be produced: technical alcohol; dehydrated technical alcohol (bioethanol); high purity alcohol (medical standard). Main products give 85% of income and 15% – secondary products.

## FINANCIAL DETAILS:

Project costs: 120 mln. USD. It is proposed for partners to provide co-financing for joint plant development.

Payback period is 5–6 years.



# Why Zhytomyr region?

We are ready for strong and effective cooperation. We create a reliable system of cooperation with international partners, as well as a system of their legal and technical support. We already have a successful experience of cooperation with international partners and implementation of project with them in Zhytomyr region.

The region is located in Central Ukraine and is a transit area "bridge" between East and West, with well-developed transport communications. With a strong raw material base, industrial potential and the regime of the greatest assistance to the work of international partners, Zhytomyr region is a region of new opportunities open to international cooperation.



# PLEASE CONTACT US

## ZHYTOMYR REGIONAL DEVELOPMENT AGENCY

10014, Ukraine, Zhytomyr region, Zhytomyr city, maydan  
Korolyova 1

Action Director

Margaret Siranchuk

Phone: +38 093 43 79 613

Email: [invest@zrda.org](mailto:invest@zrda.org)



## DEPARTMENT OF AGRO-INDUSTRIAL DEVELOPMENT AND ECONOMIC POLICY OF ZHYTOMYR REGIONAL STATE ADMINISTRATION

10014, Ukraine, Zhytomyr, 25 Mala  
erdychivska Street

Mrs. Nataliia Arendarchuk

Director of Department

Phone: +380412473883

Email: [ekonomika@oda.zt.gov.ua](mailto:economika@oda.zt.gov.ua)

